



Centrifuge Extractor

/ LAB1ST Scientific Instruments



LAB1ST / Laboratory and Processing Equipment

Labfirst Scientific Instruments (Shanghai) Co., Ltd

☎ +86-13524020331 (China)

+1-844-452-2178 (USA)

✉ sales@lab1st.com

🌐 www.lab1st.com

📘 lab1st

📷 lab1st_extraction


Centrifuge Extraction System


A centrifuge is a piece of equipment that puts an object in rotation around a fixed axis (spins it in a circle), applying a force perpendicular to the axis of spin (outward) that can be very strong. The centrifuge works using the sedimentation principle, where the centrifugal acceleration causes denser substances and particles to move outward in the radial direction. At the same time, objects that are less dense are displaced and move to the center.

Lab1st Centrifuge extraction system (alcohol extraction system) that use closed-loop technology enable operators to target botanical oil compounds from diverse plant species. Boasting a 97% alcohol removal from biomass, the LXJ Series system streamline production times and maximize extraction yield, ensuring the delivery of high-purity extractions. Comes equipped with on-demand heating and chilling, providing the system with maximum control and ease of operation.



 **97%**
Alcohol Removal

 **98%**
Botanical Compound Removal

 **7.5–260lbs**
of Biomass per Batch

 **-60°C**
Low Temperature Rating

FEATURES

Multiple Choices

- 6 Process Capacity Options:
7.5lbs/20lbs/ 35lbs/ 75lbs/ 140lbs/ 260lbs Biomass per Batch



Heat Insulation Jacket

- To prevent the alcohol from warming up
- To avoid frost in the surface, more convenient



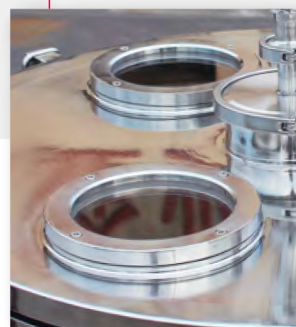
Configurable HMI Position

- Configurable HMI Position for easy switch between right-hand and left-hand operation



More Details

- High Quality Ex-proof Motor, Durable in Use
- Stainless Steel Construction
- Tri-clamp Fittings for Feed and Drain Port
- Reinforced Sight Glass
- Bi-Directional Agitation
- GMP Standard/ UL Standard (optional)



TECHNICAL DATA

Model	LXJ-300N	LXJ-450N	LXJ-600N	LXJ-800N	LXJ-1000N	LXJ-1250N
Capacity per batch (lbs/kg)	7.5/3.4	20/9.1	35/15.9	75/34.1	140/63.6	260/118
Capacity per hour(kg)	8.5	22.7	39.7	85.1	127.1	236.1
Solvent Volume (L)	40	105	175	380	700	1200
Basket Volume (L)	25	65	115	250	480	860
G-factor	650	580	540	560	560	560
Temperature (°C)	-50°C ~ 50°C					
Working Pressure (Mpa)	atm					
Jacket Pressure (Mpa)	atm-0.7					
Feeding	Open cover to feed in and out					
Contact part material	SUS 304 (option SUS 316L)					
Centrifuge support	Rubber shock absorption			Damping suspension		
Power	Voltage : 380V/220V ; Hz : 50HZ/60HZ					
Certification	Option : NRTL, C1D2, Peer Engineer				Review	
Basket Diameter (mm)	300	450	600	800	1000	1250
Basket Height (mm)	350	400	400	470	590	700
Max Speed (rpm)	2000	1500	1250	1100	1000	900
Feeding port (mm)	1.5"Tri-clamp			2"Tri-clamp		
Vent Valve(mm)	KF25					
Wash Port (mm)	1"Tri-clamp					
Drain Port (mm)	1.5"Tri-clamp			2"Tri-clamp		
Jacket inlet and outlet(mm)	1"Tri-clamp					
Jacket Volume (L)	8	21	28	45	65	100
Motor Power(KW)	1.5	3	4	11	15.0	18.5
Motor Type	four-pole motor			Six-pole motor		
Explosion-proof grade	BT4					
PLC	Standard;Option:Siemens Brand					
Touch panel	Standard;Option:Siemens explosion-proof touch screen					
Package Weight(Kg)	260	410	800	1350	2000	3000
Centrifuge Dimension (W X D X H) cm	110*65*102	140*85*108	160*106*125	170*140*160	230*150*150	240*160*160
380V Electric control Box Dimension (W X H X D) cm	40*50*20	50*(120+10)*40	50*(120+10)*40	60*(120+10)*40	60*(120+10)*40	60*(140+10)*40
220V Electric control Box Dimension (W X H X D) cm			60*(120+10)*40	80*(120+10)*40	80*(140+10)*40	80*(140+10)*40

TURNKEY SOLUTION



Storage Tank



Pneumatic Diaphragm Pump



Filter Bag Available



Chiller Available to
Make Heat Preservation

LAB1ST

/ Laboratory and Processing Equipment

Labfirst Scientific Instruments (Shanghai) Co., Ltd

+86-13524020331 (China)

+1-844-452-2178 (USA)

sales@lab1st.com

www.lab1st.com

lab1st

lab1st_extraction